

ment à la baisse ses
européen a dû re
plus dures
nt il réclamait pl.
e-
nc
t pèse en ju
teurs de



EDITORIAL ANALYSIS



teurs de
i pèse en ju
nc
plus dures
européen a dû re
ment à la baisse ses
nt il réclamait pl.



08/03/2025

MISSPELT

Q1. Which of the following is the correct spelling for the word meaning “consisting of various kinds or diverse elements”?

- a) Miscellaneous
- b) Miscelleneous
- c) Miscellanous
- d) Miscellaneous
- e) None of these



MISSPELT

2. Which of the following is the correct spelling for the word meaning “a person with expert knowledge or taste, especially in matters of art or culture”?

- a) Connoisseur
- b) Connoisseur
- c) Connoissour
- d) Connoisseur
- e) None of these



MISSPELT

Q3. Which of the following is the correct spelling for the word meaning “a fictitious name used by an author instead of their real name”?

- a) Pseudonym
- b) Psuedonym
- c) Pseudonym
- d) Pseudonim
- e) None of these

Samant
Suraj Mukhi


MISSPELT

4. Which of the following is the correct spelling for the word referring to a person who organizes and manages a business venture?

- a) Entrepreneur ←
- b) Entrapreneur
- c) Entrepeneur
- d) Entreprenuer
- e) None of these


MISSPELT

5. Which of the following is the correct spelling for the word meaning “mutual trust and friendship among people who spend a lot of time together”?

- a) Camaraderi
- b) Camaraderie 
- c) Camaradery
- d) Camaraderie
- e) None of these

one-word substitution

Q1. What do you call a person who pretends to be someone else to deceive others?

- a) Charlatan
- b) Impostor 
- c) Opportunist
- d) Mimic
- e) None of these

one-word substitution

Q2. What is the practice of having only one husband or wife at a time? ✓

- a) Bigamy
- b) Celibacy
- c) Polygamy
- d) Monogamy ✓
- e) None of these

Monogamy
one Marriage

one-word substitution

Q3. What do you call a person who dislikes humankind and avoids society?

a) ~~Humanitarian~~

b) ~~Philanthropist~~


c) Misanthrope 

d) ~~Altruist~~

e) None of these

one-word substitution

Q4. What is the act of secretly cooperating with an enemy? 

- a) Collusion 
- b) Betrayal
- c) Conspiracy
- d) Treason
- e) None of these

one-word substitution

Q5. What is a person called who is indifferent to emotions like joy or pain?

- a) ~~Empathetic~~
- b) Stoic
- c) ~~Sentimental~~
- d) ~~Pessimist~~
- e) None of these

*Callous
Apathy*



Inclusion in public spaces — from fear to freedom ✓

1.
Synonyms

2.
Antonyms

INDEX
OF
CONTENTS

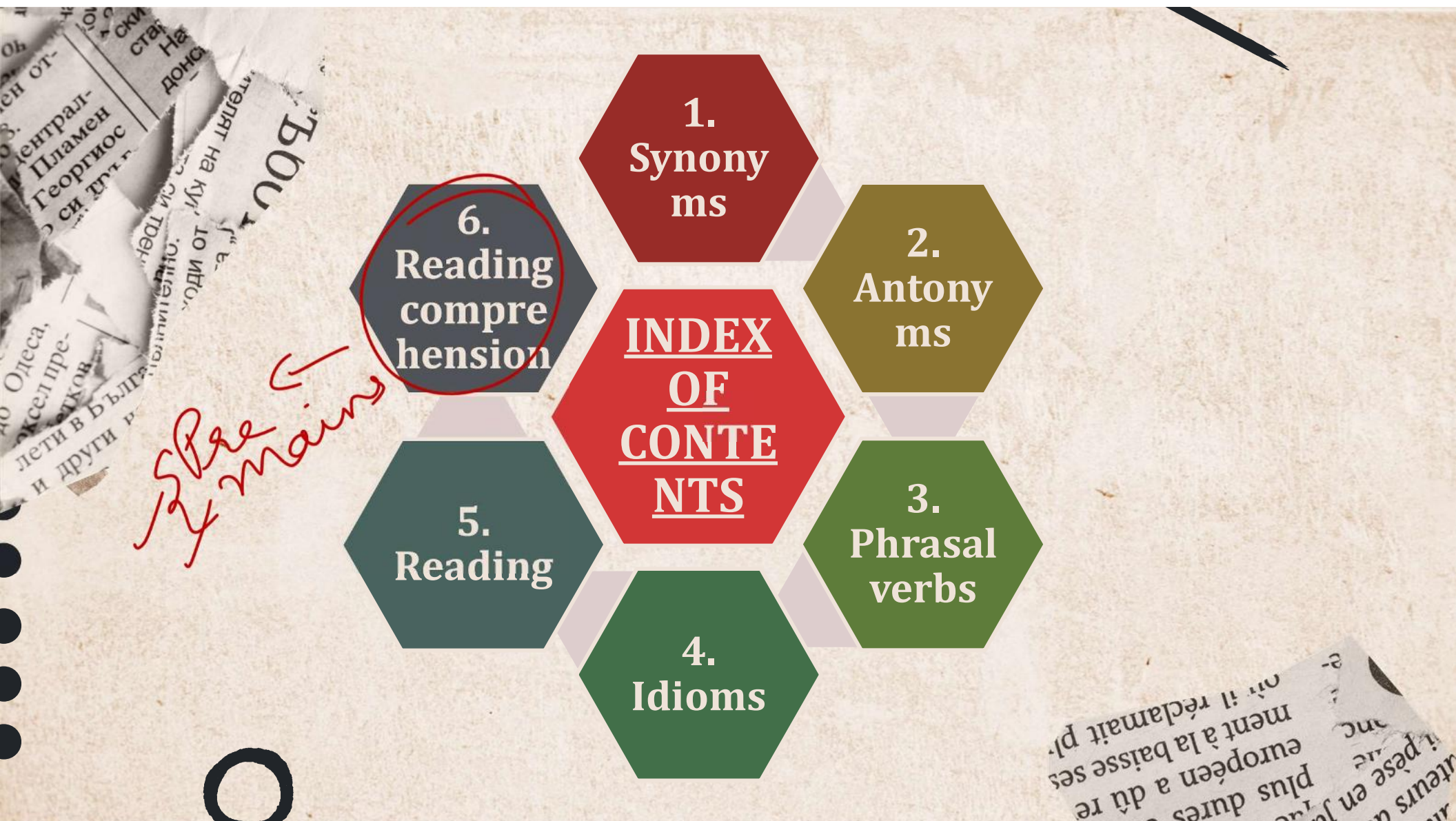
3.
Phrasal verbs

4.
Idioms

6.
Reading comprehension

5.
Reading

Spere mains



1. Deliberate

Part of Speech: Adjective /
Verb

Meaning: ~~Done consciously and intentionally; characterized by careful thought or consideration;~~ to think about or discuss something carefully.



• **Hindi Translation:** जानबूझकर (adj.), विचार करना (verb)

• **Synonyms:**

- 1. intentional, ✓
- 2. calculated, ✓
- 3. premeditated, ✓
- 4. measured, ✓

• **Antonyms:**

- 1. accidental, ✓
- 2. unintentional, ✓
- 3. spontaneous, ✓
- 4. impulsive, ✓

• **Example Sentence:** The committee took a deliberate approach to reviewing the proposal before making any decisions.

Considered
Planned
forethought
Purposeful
willful

Contemplate
Meticulous
→ Intricate
→ Complex
→ Scrupulous
Conscious
mull over
brood over





2. Entrench

Part of Speech: Verb

Meaning: To establish something firmly so that change is very difficult or unlikely; to dig in or secure deeply.

X
X
X

• **Hindi Translation:** जड़ जमाना, गढ़ लेना

• **Synonyms:**

1. embed, ✓
2. establish, ✓
3. fix, ✓
4. implant, ✓

secure fortified Spur
rooted Animate Accelerate
Instill Empower Catalyse

• **Antonyms:**

1. loosen, ✓
2. dislodge, ✓
3. uproot, ✓
4. remove, ✓

Consolidate strength
Support → aid, help, bolster
Revitalize - Enliven

• **Example Sentence:** Over the years, outdated practices became entrenched in the organization, making reform a daunting challenge.

3. Dismantle

Part of Speech: Verb

Meaning: To take something apart so that it is no longer in operation or no longer exists in its original form; to break down.



• **Hindi Translation:** खोलना, विघटित करना

• **Synonyms:**

1. disassemble,
2. take apart,
3. break down,
4. deconstruct,

✓ demolish undo
✓ Raze
✓ Damage

• **Antonyms:**

1. assemble,
2. construct,
3. build,
4. establish,

✓ put together
Impair
Eradicate
root. ←

• **Example Sentence:** The government decided to dismantle the old structure to pave the way for modern development.



Arena

4. Arenas

Part of Speech: Noun

Meaning: Plural form of arena; fields or areas of activity, interest, or conflict; spaces where events take place.

X
X
X

• **Hindi Translation:** मैदान, क्षेत्र

• **Synonyms:**

1. ✓ ~~fields,~~
2. ✓ ~~domains,~~
3. ✓ ~~spheres,~~
4. ✓ ~~stages,~~

venue
setting
Platform ✓

Trivial, Negligible
Stagnant
Sedentary,

• **Antonyms:**

1. ✓ ~~non-venues,~~
2. ✓ ~~voids,~~
3. ✓ ~~inactivity,~~
4. ✓ ~~insignificance,~~

battleground ✓
Theatre ✓

Couch Potato,
Idle, Lethargic,

• **Example Sentence:** The political arenas of modern society are often as contentious as sports arenas during a championship game.

controversial

5. Foster-Cultivate

Part of Speech: Verb

Meaning: To promote the growth or development of something; to nurture, support, and encourage.



• **Hindi Translation:** पोषित करना, बढ़ावा देना

• **Synonyms:**

1. nurture, ✓
2. encourage, ✓
3. promote, ✓
4. cultivate, ✓

foster

boost

Empathy

Adopt

provoke

Kindness

Motivate

Invigorate

Benign

• **Antonyms:**

1. hinder, ✓ Imped
2. discourage, ✓
3. stifle, ✓
4. suppress, ✓

Trigger

Insist

↓

Accelerate

Expedite

Good
Benefit

Catalyse

• **Example Sentence:** The organization works to foster-cultivate talent in young entrepreneurs through mentorship programs and training.



6. Nuances

Part of Speech: Noun (plural)

Meaning: Subtle distinctions or variations in meaning, expression, or sound; fine details.



• **Hindi Translation:** बारीक अंतर, सूक्ष्मताएँ

• **Synonyms:**

1. ✓ subtleties, *shades*
2. ✓ distinctions, *refinement*
3. ✓ gradations, *fine points*
4. ✓ variations, *fine points*

• **Antonyms:**

1. ✓ generalities, *obvious* *omnipresent*
2. ✓ broad strokes, *blunt*
3. ✓ simplifications, *starkness* *ubiquitous*
4. ✓ uniformity, *ubiquitous*

• **Example Sentence:** The artist captured the nuances of the sunset, revealing the delicate interplay of colors.

7. Mobile

Part of Speech: Adjective

Meaning: Capable of moving or being moved; not fixed in one place; adaptable



- **Hindi Translation:** गतिशील

- **Synonyms:**

1. movable, ✓
2. portable, ✓
3. transportable, ✓
4. agile, ✓

- **Antonyms:**

1. stationary, ✓
2. immobile, ✓
3. fixed, ✓
4. static, ✓

flexible

Nomadic
(वसति)

Shifting

Roaming

- **Example Sentence:** With modern technology, the mobile workforce can operate from virtually anywhere in the world.



8. Spatial

Part of Speech: Adjective

Meaning: Relating to space or the relationship of objects within space; concerning the dimensions, area, or volume of an environment.



- **Hindi Translation:** स्थानिक, अंतरिक्ष से संबंधित

- **Synonyms:**

1. geographical,

2. locational,

3. dimensional,

4. areal,

- **Antonyms:**

1. non-spatial,

2. abstract,

3. nonphysical,

4. immaterial,

- **Example Sentence:** The architect used advanced software to design a building with efficient spatial organization.

xx

IDIOMS

1. Conform to

- **Meaning:** To comply with or adhere to a set of rules, standards, or expectations.
- **Example:** "Women may adjust their behaviour to conform to societal expectations."

xx

IDIOMS

2. Get integrated into

- **Meaning:** To become incorporated into or a part of a larger system or community.
- **Example:** "By actively participating in public spaces, individuals get integrated into societal processes."

xx

IDIOMS

3. Remain outside

- **Meaning:** To continue to be excluded or not included within something.
- **Example:** "More than half the female population remains outside the formal workforce."

xx

PHRASAL VERBS

1. Reflect on

0 Meaning: To think deeply or carefully about something, often in order to understand it better or draw conclusions.

0 Example: "In her essay, she took time to reflect on how public spaces shape community life."

xx

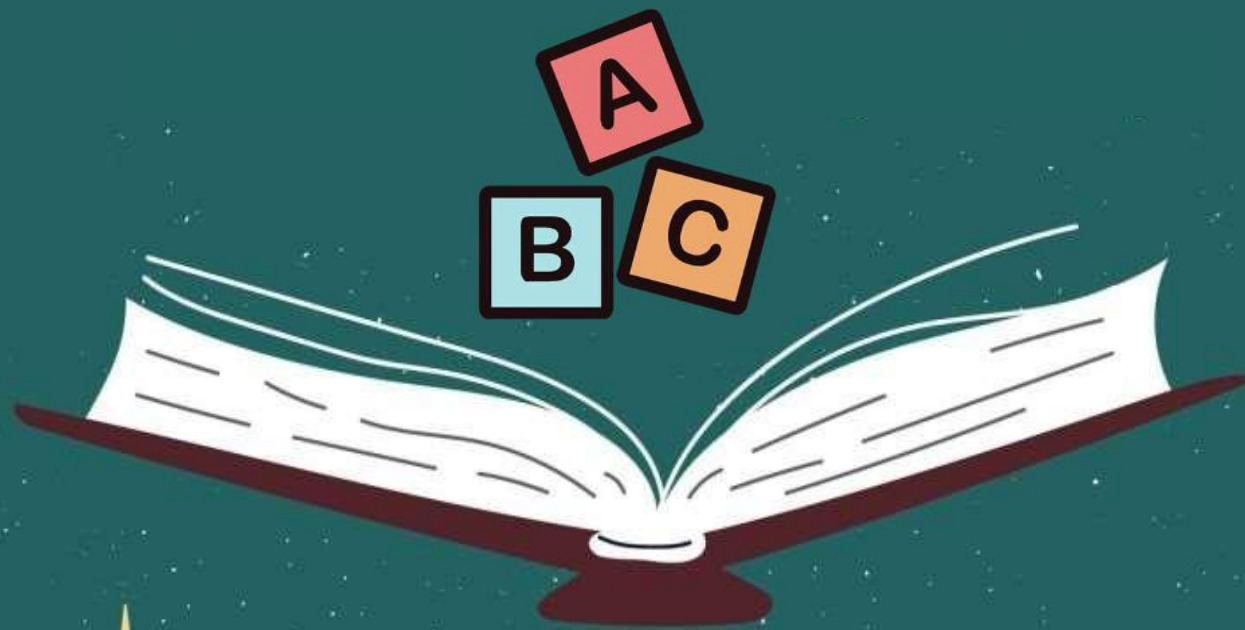
PHRASAL VERBS

2. Confined to

0 Meaning: Restricted or limited to a particular area, context, or scope.

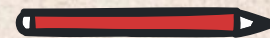
0 Example: "Many studies have shown that a large number of women remain confined to private spaces rather than engaging in public life."

SHALL WE READ?



India is often considered to be one of the most unsafe countries for women, a reality that demands urgent and deliberate change. India was ranked 128 among 177 countries rated in Women, Peace and Security Index 2023. While deeply entrenched patriarchal norms that lead to violence cannot be dismantled overnight, meaningful progress can be made by challenging the everyday barriers that women face. On International Women's Day today, it is crucial to reflect on a fundamental but an often-ignored issue — the accessibility of public spaces for women. While the topic is deeply studied and researched in the academic world, very little has changed practically. For instance, how many women do we see on roads when compared to men at any given point of time? Which are the spaces where they are more visible? And which are the areas which they completely avoid? How freely can women walk on the streets? Or do women consciously regulate their body language to conform to the male gaze? It is important to understand them because public spaces serve as arenas where socio-economic life thrives and evolves through mutual interactions and collective experiences, shaping community identities and social dynamics. It is where people cultivate political identities, build livelihoods, and actively engage in community life.

xxx

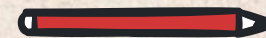


By enthusiastically participating in the everyday nuances of public spaces, individuals get more integrated into societal processes. Moreover, a key indicator of a place's safety is the presence of women freely choosing to relax and enjoy themselves there.

What impacts women's mobilities? Studies indicate that public spaces are both gendered and political where a majority of women are mostly confined to the private and domestic sphere. This gendered spatial control takes place in many ways. According to National Family Health Survey-4 (NFHS-4) data (2015-16), 54% of Indian women had the freedom to visit markets alone, while 50% could access health-care facilities independently, and 48% were permitted to travel outside their village or community unaccompanied.

Also, the Periodic Labour Force Survey (PLFS) for 2023-24 indicates that the Labour Force Participation Rate (LFPR) for women is 35.6%. Even though it has risen significantly over the years, unfortunately, this highlights that more than half the female population remains outside the workforce. Therefore, while a majority of women are confined to private spaces, there is a rising number of women who are using public spaces.

xxx



1. What is the primary concern discussed in the passage regarding women in India?

- A) Lack of access to quality education
- B) Limited participation in political decision-making
- C) Restricted mobility and accessibility of public spaces
- D) Gender pay gap in corporate jobs
- E) Declining birth rate among women

2. According to NFHS-4 data (2015-16), what percentage of Indian women could travel outside their village or community unaccompanied?

A) 35%

B) 42%

C) 48%

D) 54%

E) 50%



Q3. What does the passage imply about the relationship between public spaces and gender equality?

- A) Public spaces are neutral and equally accessible to men and women
- B) Women's participation in public spaces is a key indicator of social safety and inclusion
- C) Women prefer to stay indoors due to personal choices, not societal restrictions
- D) Economic growth does not impact women's access to public spaces
- E) Public spaces in India have become fully gender-inclusive over time

Gendered



4. Why does the author mention the Labour Force Participation Rate (LFPR) for women?

- A) To show that despite improvements, a significant number of women remain confined to private space
- B) To indicate that women's workforce participation is higher than men's
- C) To highlight that most Indian women are actively working in the public sphere
- D) To argue that employment rates are irrelevant to public safety concerns
- E) To demonstrate that economic policies have solved gender disparity issues

5. What change would likely improve women's access to public spaces?

- A) Imposing strict curfews on all public spaces
- B) Encouraging women to stay at home for their safety
- C) Implementing policies that promote safer and more inclusive public spaces
- D) Limiting women's access to public places to prevent conflicts
- E) Reducing the number of working women to increase domestic stability



6. **What is the tone of the passage?**

A) ~~Sarcastic~~

B) Neutral and analytical ←

C) ~~Indifferent~~

D) ~~Celebratory~~

E) ~~Humorous~~



R

@rubisingh2166 · 9 hr ago

Stark (adj)

Synonyms. Bare, austere, bleak, gawdy, grim, callous, rigorous, hopeless, blunt, brutal, garish, punitive, critical, distinct, severe, blatant

Antonyms

Ornate, embellished, mild, lush,

Thankyou so much ma'am ❤️❤️❤️

⋮



@Manu09enterprise · 22 hr ago

'Stark' syn:

Severe, harsh, distinct, bleak, bare, hopeless, critical, grim, austere, blunt, punitive, sorrow, brutal, gowdy, garish, callous, blatant, straightforward, rigorous.

Thank you ma'am 😊❤️😊❤️

V

@valentinathok9973 · 20 hr ago

Synonyms of Stark-

bare, bleak, austere, grim, severe, punitive, brutal, critical, blunt, distinct, gawdy, garnish, blatant, callous, rigorous, hopeless

Antonyms of Stark-

ornate, lush, embellished, mild

THANK YOU SO MUCH MAAM

⋮

⋮

Match the columns

0:40

Column A

Column B

A. Inclusion

P. To make something stronger, more solid, or more unified.

B. Stark

Q. Severe or sharp in appearance or outline; complete or sharply clear.

C. Barriers

R. The outward appearance or form of something, often with a suggestion of deception.

D. Plagues

S. Obstacles or boundaries that prevent movement or progress.

E. Fabricate

T. Widespread afflictions or troubles, often referring to diseases or calamities.

F. Gesture

U. The action or state of including or being included within a group or structure.

G. Semblance

V. A movement or action used to express a feeling or communicate something.

H. Consolidate

W. To invent, create, or construct something, often with the implication of deception.



Answer

- | | |
|-----------------------|-----------|
| A. Inclusion | U. |
| B. Stark | Q. |
| C. Barriers | S. |
| D. Plagues | T. |
| E. Fabricate | W. |
| F. Gesture | V. |
| G. Semblance | R. |
| H. Consolidate | P. |

DESCRIPTIVE WRITING

WRITE A PRECIS ON
TODAY'S ARTICLE

WRITE SYNONYMS FOR THE WORD '

xxx

'Entrench'



A graphic for an editorial quiz. At the top, a fountain pen is shown next to a red banner with the word "EDITORIAL" in white serif font. Below this, a large blue and yellow comic-style speech bubble contains the word "QUIZ!" in bold yellow letters with a black outline. A red checkmark is positioned above the bubble. To the right of the bubble is a red starburst shape with the text "JOIN NOW" in white. Below the bubble is a black stopwatch icon with motion lines, followed by the text "3PM" in large red letters. In the bottom right corner, there is a QR code with a small profile picture of the woman above it, and the text "@KINJALGADHAVIA DDA247" below the QR code.



Pdf

Kinjal Gadhavi English Adda247
Telegram Channel

Bank Maha Pack

This Course Includes



1000 Hrs Online
Live Classes



8495 Test
Series



25542
Videos



4412
E-Books

**BANK
MAHAPACK**
for all Bank & Insurance
Exam

Selection Ka Saathi

Product Highlights



Structured
Course Content



Recorded videos
of all Live Classes



Previous Years' Papers
for Practice of All
upcoming exams



Full Length Mocks
based on the latest pattern
with detailed solutions



Topic Level
Knowledge Tests



Strategy Sessions, Time
Management & Preparation
Tips from the Experts



Dedicated live rooms
for doubts solving

Exams Covered



IBPS PO



IBPS RRB
PO Clerk



LIC
Assistant



Bank Foundation
Batches 2024



IDBI



SBI PO



IBPS
Clerk



RBI
Assistant



SBI
Clerk

For Max Discount

Use Code

Y659



Find Courses by Exams

- Bank Maha Pack
- SBI Clerk
- SBI PO
- Bank Batches 20...
- IBPS PO
- IBPS RRB PO Clerk

Find Courses by Product Type

- Mock
- Live Class
- Home
- Community
- My Content
- Test Prime
- Store

Triple Validity **BANK MAHAPACK** for all Bank & Insurance Exams

Hinglish MAHAPACK

Bank Maha Pack for IBPS, RRB & SBI Exams

10k+ Mock Tests 12k+ Videos 6k+ E-Books

₹3448.85 ₹14995 (77% off)

Triple Validity **BANK MAHAPACK SELECTION BOX 2.0** With English Book Kit Personalized Selection Box

Hinglish Live + Recorded

Bank Maha Pack Selection Box 2.0 With English Book ...

10k+ Mock Tests 12k+ Videos 4k+ E-Books 6 Books

₹5748.85 ₹24995 (77% off)

Triple Validity **BANK MAHAPACK SELECTION BOX** With Hindi Book Kit Personalized Selection Box

Hinglish MAHAPACK

Bank Mahapack Selection Box Hindi Book Kit

10k+ Mock Tests 10k+ Videos 6k+ E-Books 6 Books

₹4368.85 ₹18995 (77% off)

Triple Validity **BANK MAHAPACK PLUS** For IBPS, SBI, SIDBI, RBI Grade B, +5 More

Hinglish MAHAPACK

Bank Maha Pack Plus For IBPS, SBI, RBI Grade B, SEB...

13k+ Mock Tests 27k+ Videos

SORT & FILTER

BANK MAHAPACK for all Bank & Insurance Exams

Selection Ka Saathi

Bank Maha Pack for IBPS, RRB & SBI Exams

Exams Covered: 9 MAHAPACK

Offers & Discounts **Y659**

"Y659" coupon applied

Use Coins: 1499.50

For Admission Enquiry CALL NOW

Select Validity 3 x 6 Months

What will you get

- Access to Structured Classes in Live & Recorded Form
- Mock & Topic Tests based on Latest Pattern with

₹ 2999 More Offers

₹14995 (80% off)

BUY NOW →



Triple Validity **BANK MAHAPACK**
for all Bank & Insurance Exams
Selection Ka Saathi

Hinglish MAHAPACK
Bank Maha Pack for IBPS, RRB & SBI Exams
10k+ Mock Tests 11k+ Videos
6k+ E-Books
₹3448.85 ₹14995 (77% off)

Find Courses by Exams

- Bank Maha Pack
- SBI Clerk
- SBI PO
- Bank Batches 2025
- IBPS PO
- IBPS RRB PO Clerk

Hinglish Offline Batch
SBI CLERK MAINS 2025 MRP BATCH
MAINS RESIDENTIAL PROGRAM
STARTS: 17 MARCH 2025

SBI Clerk 2025 MRP Batch | Mains Residential Program...
₹12648.85 ₹54995 (77% off)

Double Validity **WINNERS FOR MAINS**
SBI | 2024-25
Starts: 5 Mar, 25 | 10 am - 9 pm

Hinglish Live + Recorded
Winners for Mains | SBI | 2024-25 | Online Live Clas...
30 E-Books
₹1378.85 ₹5995 (77% off)

Find Courses by Product Type

- Mock
- Live Class
- Home
- Community
- My Content
- Test Prime
- Store

Hinglish Live + Recorded
TOPPERS FOR MAINS
IBPS, RRB, SBI | 2024-25

Toppers for Mains | IBPS, RRB, SBI | 2024-25 Batch | ...

SORT & FILTER

BILINGUAL **WINNERS FOR MAINS**
SBI | 2024-25
Starts: 5 Mar, 25 | 10 am - 9 pm
Hinglish

Winners for Mains | SBI | 2024-25 | Online Live Classes by Adda 247

Double Validity Exams Covered: 3 Live + Recorded

Starts: 05-Mar-2025 Seats: 500
Timings: 10:00 AM - 09:00 PM

Offers & Discounts

- "Y659" coupon applied
- Use Coins: 599.50
- For Admission Enquiry **CALL NOW**
- Validity 2 x 6 Months

₹ 1199 More Offers
₹5995 (80% off) **BUY NOW →**

SBI PO



GUESS Paper

EXAM से पहले ये **QUESTIONS** देख लो

07 MARCH **9** AM

Only On **Adda247** YouTube Channel